



# COMPANY PROFILE TRIVIET STEEL



Design

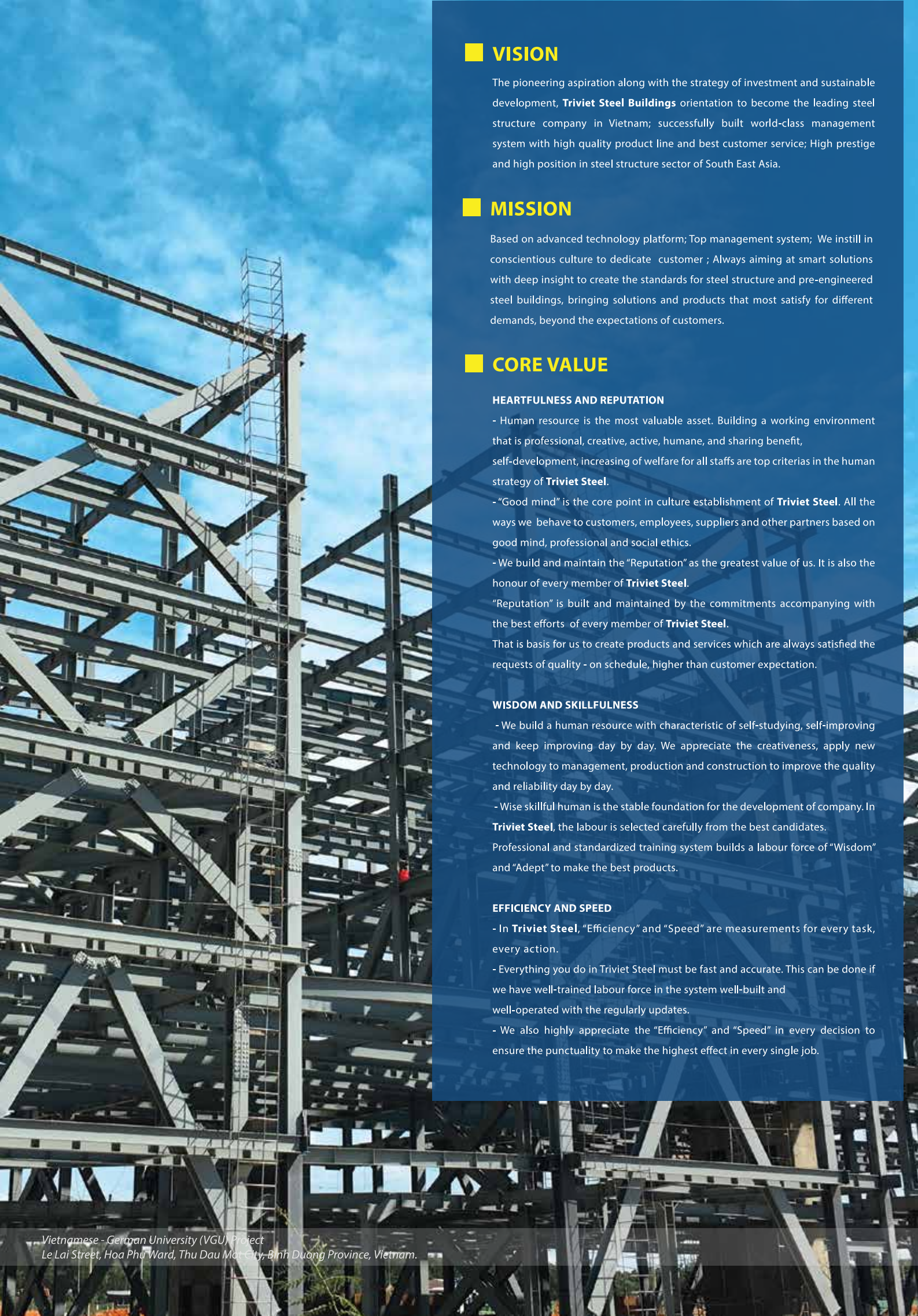


Manufacturing



Installation





## VISION

The pioneering aspiration along with the strategy of investment and sustainable development, **Triviet Steel Buildings** orientation to become the leading steel structure company in Vietnam; successfully built world-class management system with high quality product line and best customer service; High prestige and high position in steel structure sector of South East Asia.

## MISSION

Based on advanced technology platform; Top management system; We instill in conscientious culture to dedicate customer ; Always aiming at smart solutions with deep insight to create the standards for steel structure and pre-engineered steel buildings, bringing solutions and products that most satisfy for different demands, beyond the expectations of customers.

## CORE VALUE

### HEARTFULNESS AND REPUTATION

- Human resource is the most valuable asset. Building a working environment that is professional, creative, active, humane, and sharing benefit, self-development, increasing of welfare for all staffs are top criterias in the human strategy of **Triviet Steel**.
- "Good mind" is the core point in culture establishment of **Triviet Steel**. All the ways we behave to customers, employees, suppliers and other partners based on good mind, professional and social ethics.
- We build and maintain the "Reputation" as the greatest value of us. It is also the honour of every member of **Triviet Steel**.
- "Reputation" is built and maintained by the commitments accompanying with the best efforts of every member of **Triviet Steel**.
- That is basis for us to create products and services which are always satisfied the requests of quality - on schedule, higher than customer expectation.

### WISDOM AND SKILLFULNESS

- We build a human resource with characteristic of self-studying, self-improving and keep improving day by day. We appreciate the creativeness, apply new technology to management, production and construction to improve the quality and reliability day by day.
- Wise skillful human is the stable foundation for the development of company. In **Triviet Steel**, the labour is selected carefully from the best candidates. Professional and standardized training system builds a labour force of "Wisdom" and "Adept" to make the best products.

### EFFICIENCY AND SPEED

- In **Triviet Steel**, "Efficiency" and "Speed" are measurements for every task, every action.
- Everything you do in Triviet Steel must be fast and accurate. This can be done if we have well-trained labour force in the system well-built and well-operated with the regularly updates.
- We also highly appreciate the "Efficiency" and "Speed" in every decision to ensure the punctuality to make the highest effect in every single job.



Design



Manufacturing



Installation

1	General information
2	Letter of introduction
3	Certificate
4	Organizational chart
5	Office
7	Factory - Project management board
9	Design capacity
11	Manufacturing capacity
11	Introduction - Production process
13	Machinery & Equipment
15	Construction capacity
15	Erection process
17	Construction progress & safety
19	Typical Projects
19	Vietnam projects
59	Myanmar projects
63	Clients & Partners





• **COMPANY NAME:** TRIVIET STEEL BUILDINGS CO.,LTD

• **REPRESENTED BY:** Mr. Nguyen Phi Thuong - Chairman

• **HEAD OFFICE & FACTORY:**

• **BINH DUONG FACTORY:**

**Address:** Land Parcel No. 20, Map No. 14, Ong Dong Hamlet, Tan Hiep Ward, Tan Uyen Dist., Binh Duong, Vietnam.

**Tel:** (+84.274) 365.3080 - Fax: (+84.274) 365.3079

• **CHAU DUC FACTORY:**

**Address:** Lot No.29, D2 Street, Chau Duc IP, Nghia Thanh W., Chau Duc Dist., Ba Ria Vung Tau Province, Vietnam.

• **HO CHI MINH OFFICE:**

**Address:** 3rd Floor, Carina Plaza, No. 1648 Vo Van kiet St., Ward 16, Dist. 8, HCM City, Vietnam.

**Tel:** (+84.28) 6298 5703 - 6298 5704 - 6298 5530 - Hotline: (+84) 982 84 98 99

• **HA NOI OFFICE**

**Address:** 12th Floor, Viwaseen Tower, 48 To Huu St., Trung Van Ward, Nam Tu Liem Dist., Ha Noi , Vietnam.

**Tel:** (+84) (024) 32 018 279

• **TRIVIET STEEL MYANMAR:**

**Address:** No. H39, 3rd Main Road, Thiri Yadanar Wholesales Complex Market, North Okkalapa Township, Yangon, Myanmar.

**Tel:** (+95) 9953 335 124 - Myanmar Office

(+95) 9953 335 125 - Business Department

## LETTER OF INTRODUCTION

**Triviet Steel Buildings** is a professional company operating in pre-engineered steel buildings industry in Vietnam. Having vision to become a leading supplier of pre-engineered steel structure, not only fabricating and supplying steel structure products, but also operating **“Total solution for pre-engineered steel structures”** for the customers with all-in services: **Design – Fabrication – Erection.**

**Triviet Steel Buildings** is always content and proud of our capacity in order to bring the suitable solutions to the customers, meet our clients’ demands with very competitive price. In order to meet high technical demands of large-scale projects, **Triviet Steel Buildings** continuously improves specialized and managed capabilities, and applies ISO 9001:2015 quality management system to our company. Furthermore, Triviet Steel Buildings also encourages the favorable working environment, employing talents, promoting the creativity and independence of employees that the company could sustainable business growth.

### Triviet Steel Buildings Capacity:

- ♦ The First steel structure manufacturing factory with an area of **20,000 sqm**; fully equipped with automatic machineries & equipment with design capacity of **1,500 tons / month; 18,000 tons per annum.**
- ♦ Going on investing to improve the quality and increase the capacity, in 2022, the second factory with an area of **73,000 sqm** in Chau Duc IZ – Ba Ria Vung Tau would come into operation, capacity would be **4,000 tons** for each month, increasing manufacturing capacity up to **48,000 tons per annum.**
- ♦ On the way to invest in the North of Vietnam market, the third factory would come in to operation in 2023. The mentioned factory is on the area of **22,000 sqm** in An Phat 1 IZ – Hai Duong would contribute the capacity of **1,500 tons/month (approx. 18,000 tons per annual).**
- ♦ The grand gross capacity of three factories would reach the rate **7,000 tons/month (approx. 84,000 tons per annual).**

With professional and devoted engineers, we support and supply the free service of **“Consulting, supplying design solutions and making quotation”** to clients. Therefore, no matter which phase your project is currently in, we can always find the suitable solution to your requirements. Contact us to get the fastest free-of-charge support.

Not at all, Triviet Steel also provide the erection service qualify to the criteria of **“Quality – Safety – Aesthetics”** with a standardized project management system, experienced engineers and well-trained workers. The procedures of fabrication and construction would be tracked strictly from the step of raw material checking to the step of on-site erection, to ensure the best products to client. The warranty and maintainance are also a part of our services to provide a professional maintainane to the building, to keep the project in the best condition of carings and sustainable.

Being a leading supplier of pre-engineered steel structure in Vietnam with the best quality and service is Triviet Steel Buildings’ mission. Thus, we commit to ensure excellent quality of our products and the satisfaction of our clients.

Many thanks for your attention to Triviet Steel Buildings. We hope to cooperate and serve you.

Best regards!

**NGUYEN PHI THUONG**  
*Chairman*





**Certificate of Construction Activity Capability No. BXD-00026471** issued by Binh Duong Department of Planning and Investment under Decision No. 35/QĐ-HĐXD-DN on November 17th, 2020, certified the scope of work as **Certified Construction Type Is Industrial (chemical) Class I.**



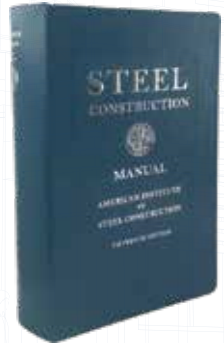
**ISO**  
9001:2015



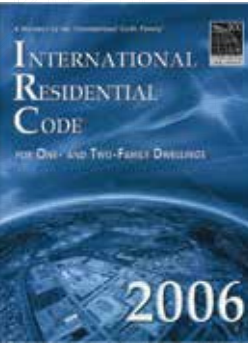
**AWS**  
WELDING CODE



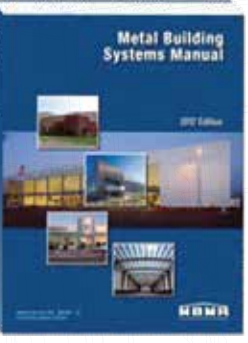
**AISI**  
COLD FORMED CODE



**AISC**  
STEEL CONSTRUCTION



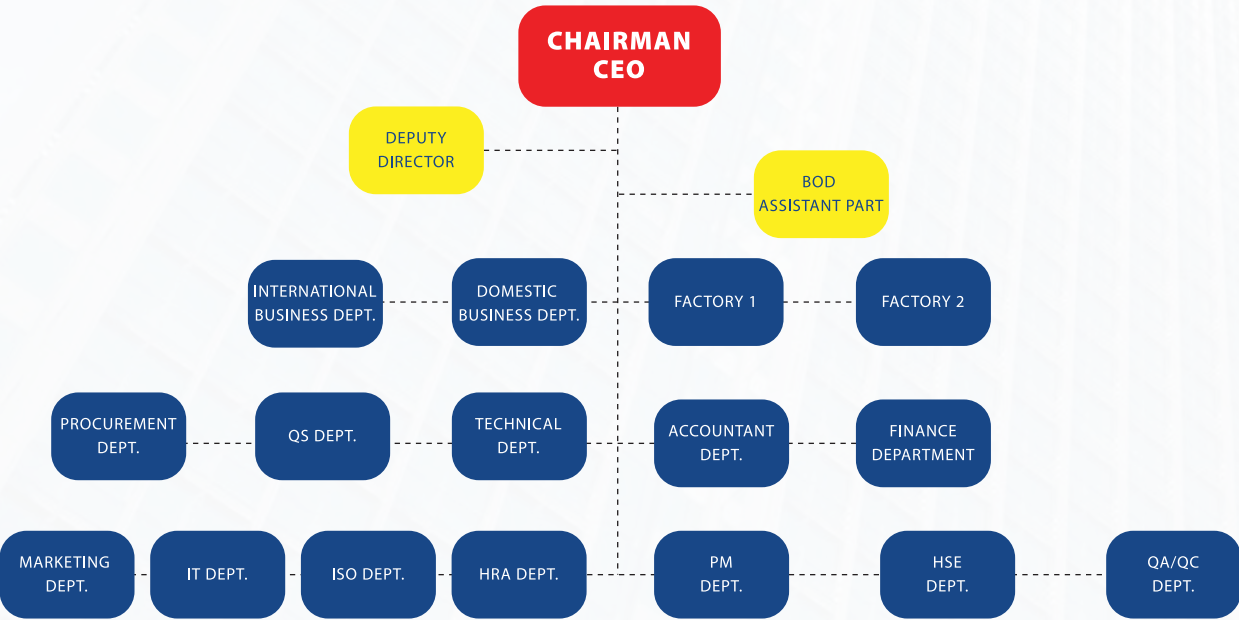
**IBC**  
INTERNATIONAL  
BUILDING CODE



**MBMA**  
METAL BUILDING  
SYSTEMS MANUAL



ORGANIZATIONAL CHART



**NGUYEN PHI THUONG**  
**CHAIRMAN - CEO**  
Experience: 22 years

"I want to build **Triviet Steel Buildings Company Limited** with the vision to become the Pre-Engineering Building supplier of best quality and service in Vietnam, based on the foundations of administrations, trainings and cultures which have been formed by every member of **Triviet Steel** throughout the time".



**VU TRONG HOANG**  
**DEPUTY DIRECTOR - MANAGER OF BUSINESS DEPT**  
Experience: 16 years

"Basing on strictly procedures and the deeply understanding in every demand from client, we provide smart solutions with a force of warm-hearted consultants and professional technicians who always listen to every request to find out the best ways that can respond to the concerns of client"



**TRAN NGOC THU**  
ACCOUNTING MANAGER



**PHUNG LE TOAI Y**  
HUMAN RESOURCE MANAGER



**BUI DONG DUONG**  
QA/QC MANAGER



**TRAN HUYNH VAN NHI**  
ISO MANAGER



**NGUYEN DUY QUYNH**  
HSE MANAGER



**NGUYEN THI ANH THUYEN**  
PURCHASING MANAGER



**BUI THANH KHANG**  
IT MANAGER



**NGUYEN NGOC THANH**  
ENGINEERING MANAGER





**CHEONG CHOONG SIN (TONY)**  
**DIRECTOR OF TRIVIET STEEL MYANMAR**

**Experience:** 17 years

*"Triviet Steel Myanmar is the next step to invest and deliver our core values abroad. For Myanmar market, we commit that the investing shall be deep and durable to share the benefit and grow up with this beautiful country and people of Myanmar."*



**NGUYEN TRI THUC**  
**FACTORY DIRECTOR**

**Experience:** 18 years

*"Manufacturing is the second main step in our core procedure, after the solutions from designs. We are keeping investing to enlarge factories with modern equipment and more effective production chains day by day. Furthermore, by investing deeply in system of quality control and production management I believe that the productivity will be improved to make our products be the best in quality, durability and accuracy."*



## BINH DUONG FACTORY

- Area: 20,000 m<sup>2</sup>
- Capacity: 1,500 tons/month  
18,000 tons/year
- Location: Binh Duong Province



## CHAU DUC FACTORY

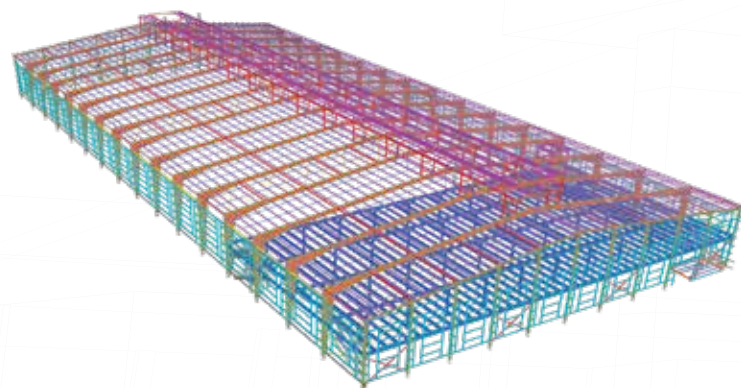
- Area: 73,000 m<sup>2</sup>
- Capacity: 4,000 tons/month  
48,000 tons/year
- Location: Ba Ria - Vung Tau Province





#### DESIGN PLANNING:

- Our professional staffs will give clients devoted consultancy and help the owners to choose the optimal solution.
- Professional design engineers are willing to listen to new ideas and requests from investors. After reaching agreement with the investors, we will proceed our plan of technical design documents suitable with the usability and materials solutions to ensure the durability and aesthetics of the project.



- Based on the technical design documents agreed between the investors and **Triviet Steel**, the technical team will proceed details of the building components for manufacturing.





### MANUFACTURING CAPACITY:

- The First steel structure manufacturing factory with an area of **20,000 sqm**; fully equipped with automatic machineries & equipment with design capacity of **1,500 tons / month**; **18,000 tons** per annum.
- Going on investing to improve the quality and increase the capacity, in 2022, the second factory with an area of **73,000 sqm** in Chau Duc IZ – Ba Ria Vung Tau would come into operation, capacity would be **4000 tons/month**, increasing manufacturing capacity up to **48,000 tons** per annum. Increase the total capacity of the factory to **66,000 tons/year**.

### MAN POWER:

- Currently, Triviet Steel Buildings' factory has about 250 staffs consist of manufacturing & maintenance workers; engineers in charge of manufacture & quality management, and 20 staffs in charge of administrative work.
- There are many seperated manufacturing teams. Every team has a leader in-charged to manage and supervise each manufacturing process.

### SAFETY:

- All staffs and workers at the manufacturing zone is we do not limit our scope with only fabricating and supplying steel structure products. Besides, depending on the specific requirements for the specialized manufacturing work, our workers are equipped properly with welding shields, tight-fitting eye goggles, face shields etc...

### PRODUCTION PROCESS

Almost process is strictly controlled

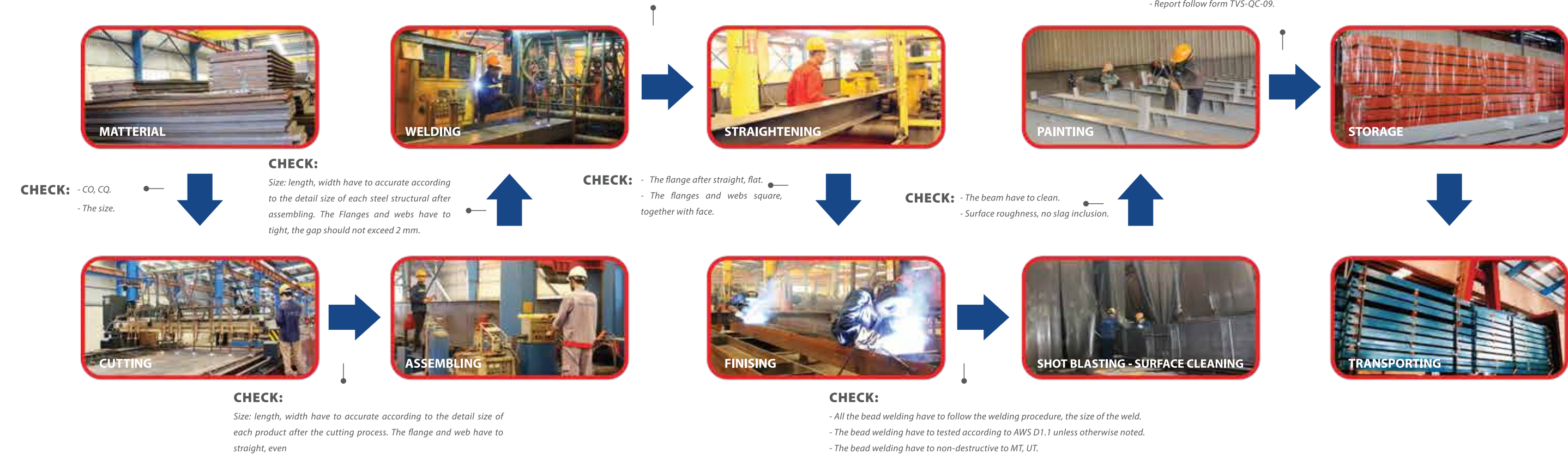


#### CHECK:

- The bead welding have to straight, uniform. Check the bead welding height according to the design drawings and the standards steel structures. The welding defects have to detected and repaired before moving to the next stage.

#### CHECK:

- The drying time for each coat is 6 hours.
- The thickness of each coat have to in accordance with the design drawing.
- Report follow form TVS-QC-09.





A	CUTTING EQUIPMENTS	QUANTITY	YEAR	ORIGIN
A.1	Multi blade cutting machine	1	2013	USA
A.2	Shearing machine 8m	1	2000	Taiwan
A.3	Semi automatic oxy gas cutter	4	2016	China
A.4	CNC Plasma & dry Cutting 13 torches	1	2016	Vietnam
A.5	Multi blade cutting machine	1	2000	Japan
A.6	Bond Saw cutting Amada	1	2000	Japan
A.7	Shearing machine Kruman 2M 35MM	2	2016	Japan
A.8	CNC Plasma and Oxy cutting 11 torches	1	2018	China
A.9	Multi Cutting iron worker	2	2010	Japan
A.10	Drilling Takeda 4020	1	2010	Japan
A.11	Shearing machine 6M	1	2010	Korea
B	MECHANICAL EQUIPMENTS	QUANTITY	YEAR	ORIGIN
B.1	3D drilling machines Fincm	1	2013	China
B.2	Drilling machine table Amada	3	2016	Japan
B.3	Drilling machine table Sunrise	1	2016	China
B.4	Drilling, punching plate Tianchen	2	2016	China
B.5	H Beam assembly machine	1	2017	China
B.6	H Beam assembly machine	1	2015	China
B.7	H Beam Total assembly machine	2	2016	China
B.8	H Beam re-straightening machine	2	2016	China
B.9	Plate bending machine 400 tons 4M	1	2010	Japan
B.10	H Beam 3D drilling Amada 4700	1	2005	China
B.11	H Beam 3D drilling Daito 1000	1	2010	China
B.12	Angle cutting and punching	1	2000	Korea
C	WELDING EQUIPMENTS	QUANTITY	YEAR	ORIGIN
C.1	AC welding machine	2	2007-2017	Vietnam
C.2	Multi operator welding machine x 2 torches	4	2006-2012	China
C.3	Multi operator welding machine x 4 torches	2	2016	China
D	CLEANING AND PAINTING EQUIPMENTS	QUANTITY	YEAR	ORIGIN
D.1	Air compressor Fuseng	4	2012-2016	Japan
D.2	Dry air compressor	1	2016	Japan
D.3	Ball blasting equipments	4	2007-2016	China
D.4	Painting equipments	6	2002-2006	USA

E	LIFTING EQUIPMENTS	QUANTITY	YEAR	ORIGIN
E.1	Overhead Crane Q= 3 - 5ton	28	2013-2016	Vietnam
E.2	Gantry Crane Q= 15 tons	1	2015	Vietnam
E.3	Gantry Crane Q= 20 tons	1	2007	Vietnam
E.4	Forklift	2	2007	Japan
F	TESTING EQUIPMENTS	QUANTITY	YEAR	ORIGIN
F.1	Ultrasonic Flaw detector	1	2016	Taiwan
F.2	Measuring equipments magnetism	1	2016	Taiwan
- Coating thickness tester				
- Micrometer Caliper, Caliper rule				
G	ROOFING EQUIPMENTS	QUANTITY	YEAR	ORIGIN
G.1	Max seam forming machine	1	2005	Vietnam
G.2	6 Ribs forming machine	2	2006	Vietnam
G.3	5 Ribs forming machine	1	2014	Vietnam
G.4	Klip-Lock forming machine	1	2005	Vietnam
G.5	Seam-Lock forming machine	2	2014	Vietnam
G.6	Decking forming machine	1	2014	Vietnam
G.7	Steel plate pressing for accessories	1	2008	China
G.8	Steel plale folding machines	1	2014	China
G.9	Steel sheet bending and cutting	1	2016	China
G.10	5 and 11 Ribs forming machine	1	2017	China
G.11	7 and 9 Ribs forming machine	1	2017	China
G.12	Kliplok 420 forming machine	1	2017	China
G.13	Kliplok 920 forming machine	1	2017	China
H	TRANSPORTATION	QUANTITY	YEAR	ORIGIN
H.1	Heavy truck 30 tons	5	2016	Korea
H.2	Van 5 - 44 tons	2	2016	Korea
I	INSTALLATION EQUIPMENTS	QUANTITY	YEAR	ORIGIN
I.1	Boom lift Genie G45	4	2010	Taiwan
I.2	Cissor Lift Genie	2	2015	USA
I.3	Cissor Lift Yamada	1	2015	Vietnam
I.4	Semi-automatic Lifting machines	1	2015	USA





- The primary structure is an installation of main components. The process must be to be in a synchronized manner complying with installation plan to ensure 100% of correct angles and altitude.
- Machinery and equipment are used throughout the installation process.
- Workers at the job site are equipped with safety equipmentat job site.



- The installation of the roof panel begins after completion of primary structure including anchor bolts and bracing systems.
- The cover system is carefully installed to ensure quality and aesthetic appeal of the building.

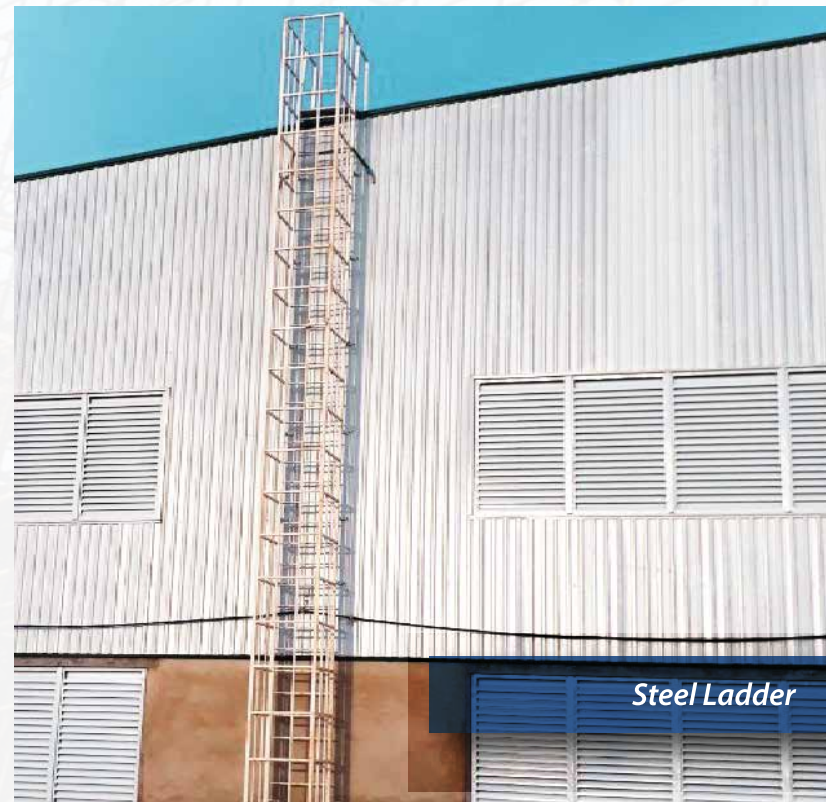




## SAFETY + FIRST

• Installation is the last stage of the product chain. Strict process compliance and construction methods are carefully prepared to ensure the safety during construction, ensure product quality, aesthetics in every detail and well-managed schedule.

• Safety, quality and punctuality are the result of the synchronization and rhythm of the whole system with skilled and professional personnel that we have built and trained over the years.



Steel Ladder



Lifeline



### CONSTRUCTION PROGRESS:

• Construction time: thanks to the close cooperation between departments in office and factory, our work strictly follows the project progress.

• Method to keep progress: site supervisor is in charge of updating and reporting regularly to the main office to handle the current situation in the construction site.

## safety level

Construction Method	Level 1	Level 2	Level 3	Level 4
Scaffolding				✓
Manlift			✓	✓
Safety Nets		✓	✓	✓
Lifeline	✓	✓	✓	✓
Steel Ladder	✓	✓	✓	✓



Safety Nets



Manlift



Scaffolding





**Adidas Shoes Factory**  
area: 28,000 m<sup>2</sup> - workload: 2,300 tons  
location: Suoi Tre IP, Dong Nai Province



**Kim Duc Fabric Bag Factory**  
area: 50,000 m<sup>2</sup> - workload: 1,400 tons  
location: Vinh Loc 2 IP, Long An Province







### SHIMMER PROJECT

#### SHIMMER C1:

**area :** 3,300 m<sup>2</sup> - **workload:** 620 tons

#### SHIMMER D1:

**area :** 8,200 m<sup>2</sup> - **workload:** 210 tons

**Location:** Cau Tram Industrial Zone,  
Long An Province

**construction work:**  
workshop



### JIA HSIN PROJECT

#### JIA HSIN A:

**area :** 16,000 m<sup>2</sup> - **workload:** 800 tons

#### JIA HSIN B:

**area :** 13,000 m<sup>2</sup> - **workload:** 1,000 tons

**location:** Cau Tram Industrial Zone,  
Long An Province

**construction work:**  
workshop



### the other project:

#### Kangna Project

**area:** 125,000 m<sup>2</sup> - **workload:** 250 tons

**location:** Long Giang IP, Tien Giang Province

#### Saigon 3

**area:** 50,000 m<sup>2</sup> - **workload:** 700 tons

**location:** Vinatex IP, Dong Nai Province

#### Long Nghi Han Factory

**area:** 10,000 m<sup>2</sup> - **workload:** 300 tons

**location:** Long Hau Industrial Zone, Long An Province

#### Bowker - Garment Factory

**area:** 12,000 m<sup>2</sup> - **workload:** 300 tons

**location:** Dong An IP, Binh Duong Province

#### Tay Ninh Kuoyuen Bating Factory

**area:** 13,500 m<sup>2</sup> - **workload:** 1,300 tons

**location:** Thanh Thanh Cong IP, Tay Ninh Province

#### Texray Vietnam - Garment Factory

**area:** 12,700 m<sup>2</sup> - **workload:** 400 tons

**location:** Loi Bich Nhon IP, Long An Province





**Tan Van Warehouse**  
area: 36,500 m<sup>2</sup> - workload: 1,300 tons  
location: Bien Hoa, Dong Nai Province



**Phu My 2 Bonded Warehouse**  
area: 29,700 m<sup>2</sup> - workload: 870 tons  
location: Phu My 2 IP, Ba Ria - Vung Tau Province



**Mapletree Viet Nam Warehouse**  
area: 115,000 m<sup>2</sup>  
location: VSIP 2 IP, Binh Duong Province







**Hoang Duc Pharmaceutical Factory**  
workload: 230 tons  
location: Long Hau IP, Long An Province



**An Thien Pharmaceutical Factory**  
area: 11,600 m<sup>2</sup> - workload: 800 tons  
location: Hiep Phuoc IP, Nha Be Dist., HCMC



**Omron Healthcare Manufacture Factory**  
area: 2,000 m<sup>2</sup> - workload: 100 tons  
location: VSIP 2 IP, Binh Duong Province





Tan Son Nhat Airport (billboard - shelves)  
workload: 800 tons  
location: Tan Binh Dist., HCMC



Vietjet Air Training Center  
area: 15,000 m<sup>2</sup>  
location: District 9, HCMC



Buon Me Thuot Airport (passenger shelter)  
area: 27,000 m<sup>2</sup> - workload: 600 tons  
location: Buon Me Thuot City, Dak Lak Province







**GreenFeed - Fodder Production Factory**  
*area: 23,000 m<sup>2</sup> - workload: 1,100 tons*  
*location: Binh Minh IP, Vinh Long Province*

**CJ Mekong - Fodder Production Factory**  
*area: 19,000 m<sup>2</sup> - workload: 500 tons*  
*location: Binh Minh IP, Vinh Long Province*

**Haid Feed - Fodder Production Factory**  
*area: 20,000 m<sup>2</sup> - workload: 1,200 tons*  
*location: Dau Giay IP, Dong Nai Province*





**PTSC 1&2 Workshop**  
workload: 1,300 tons  
location: Ba Ria - Vung Tau Province



**Ang Son 2 Cement Factory**  
workload: 2,100 tons  
location: Quang Ninh, Quang Binh Province





**the other projects:**

**Taffeta Formosa Factory**

area: 19,000 m<sup>2</sup>  
location: Nhon Trach IP, Dong Nai Province

**Hung Ca Van Y Cold Storage & Factory**

area: 10,200 m<sup>2</sup>  
location: Thanh Binh ip, Dong Thap Province

**Carlsberg Beer Factory**

area: 11,500 m<sup>2</sup> - workload: 1,400 tons  
location: Phu My IP, Ba Ria - Vung Tau Province

**Hung Vuong Tay Nam Warehouse**

area: 11,000 m<sup>2</sup>  
location: Sa Dec, Dong Thap Province

**Green Coco Factory**

area: 76,000 m<sup>2</sup> - workload: 89 tons  
location: Binh Dai, Ben Tre Province

**Baozi Tho Phat Factory**

area: 23,000 m<sup>2</sup> - workload: 150 tons  
location: Hiep Phuoc IP, Nha Be District, HCMC

**Kirin - Acecook Factory**

area: 14,700 m<sup>2</sup>  
location: My Phuoc 2 IP, Binh Duong Province



**Loc Tien Coffee Factory**

area: 50,000 m<sup>2</sup> - workload: 700 tons  
location: VSIP 2 IP, Binh Duong Province



**Masan Factory**

area: 7,300 m<sup>2</sup> - workload: 300 tons  
location: Tan Dong Hiep A IP, Binh Duong Province



**Dan On Factory**

area: 11,500 m<sup>2</sup> - workload: 400 tons  
location: My Phuoc 3 IP, Binh Duong Province



Long Yi Workshop

area: 24,000 m<sup>2</sup> - workload: 800 tons

location: my phuoc 2 ip, binh duong



Net - Washing Powder Production Factory

area: 36,000 m<sup>2</sup> - workload: 1,000 tons

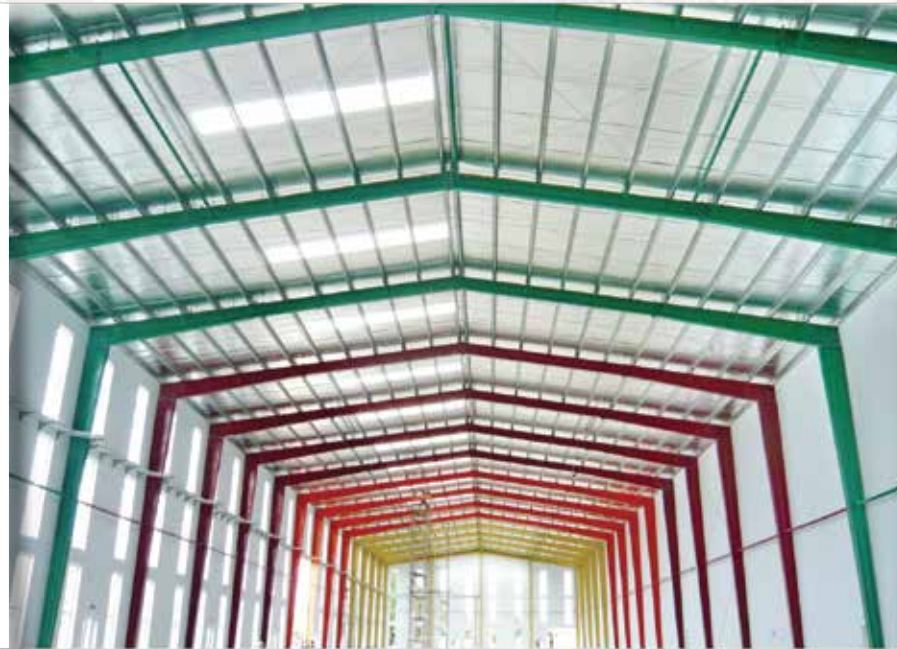
location: Loc An IP, Dong Nai Province



Mercedes Benz - Powder Coating Factory

area: 30,000 m<sup>2</sup> - workload: 500 tons

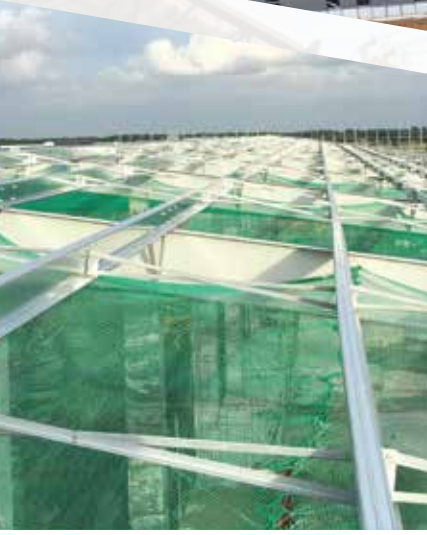
location: Go Vap Dist., HCMC







**Plastic Manufacturing Factory Lock & Lock**  
*area: 16,000 m<sup>2</sup> - workload: 1,700 tons*  
*location: Tan Thanh, Ba Ria - Vung Tau*



**Rehab Italian Design Factory**  
*area: 20,000 m<sup>2</sup> - workload: 1,000 tons*  
*location: Nam Tan Uyen IP, Binh Duong Province*

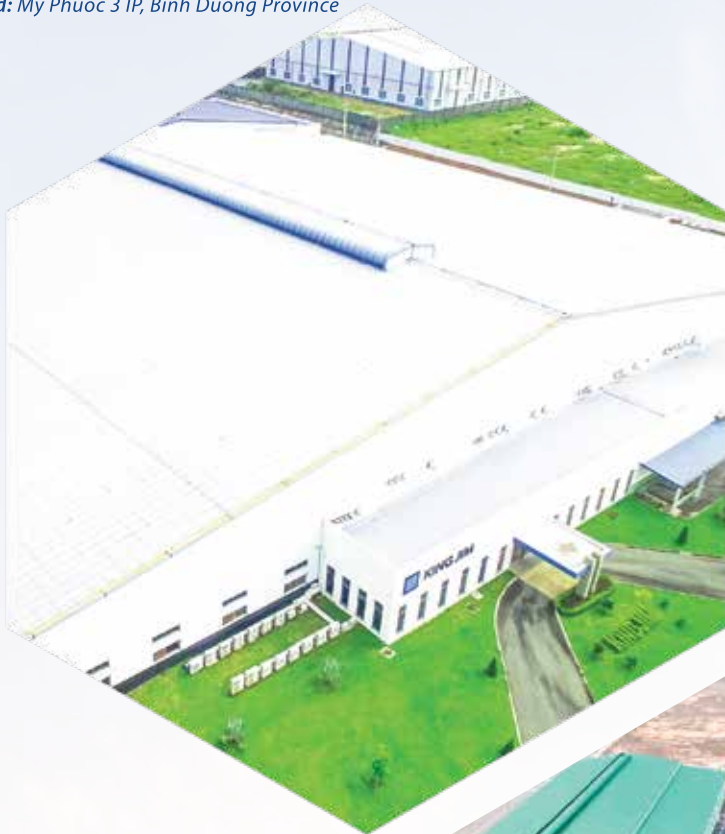


**Yuen Foong Yu (Vinh Phong) Paper Factory**  
*area: 35,000 m<sup>2</sup> - workload: 2,000 tons*  
*location: Visip II IP, Binh Duong Province*



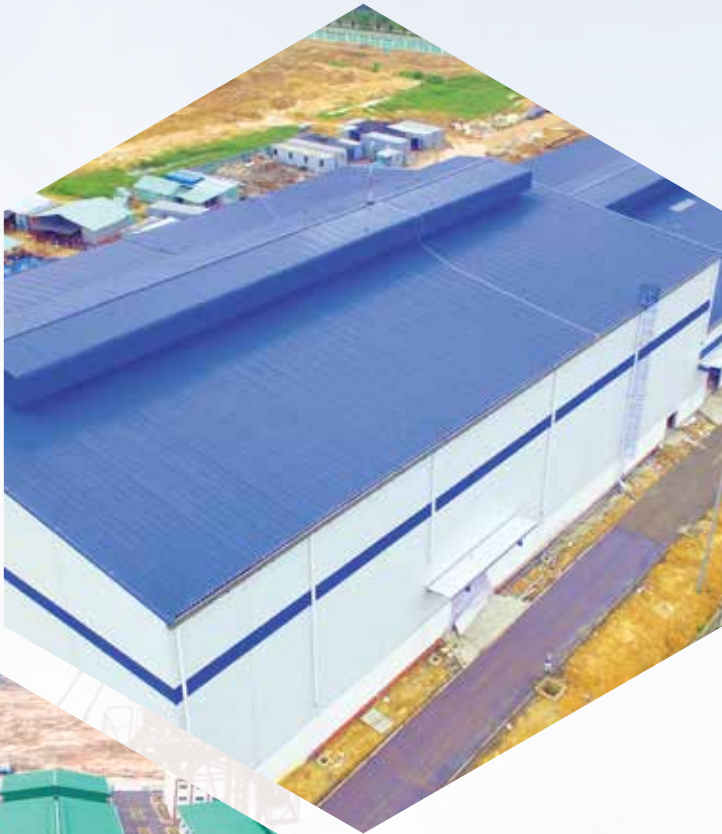
KingJim Factory

area: 18,000 m<sup>2</sup>  
workload: My Phuoc 3 IP, Binh Duong Province



Plastic Manufacturing Factory - DaemYung

area: 7,600 m<sup>2</sup> - workload: 380 tons  
location: Long Thanh IP, Dong Nai Province



Bac Hoang Factory

area: 24,000 m<sup>2</sup> - workload: 1,400 tons  
location: Ho Nai IP, Dong Nai Province



Work Shop Of Supper Foam Viet Nam Co., Ltd

area: 23,500 m<sup>2</sup> - workload: 950 tons  
location: Tan Uyen, Binh Duong Province



Pouhung Workshop

workload: 1,400 tons  
location: Cha La IP, Tay Ninh Province







**Rochdale Spears Furniture Production Factory**  
*area: 86,000 m<sup>2</sup> - workload: 2,000 tons*  
*location: Tan Uyen, Binh Duong Province*



**First Solar Factory**  
*area: 116,000 m<sup>2</sup> - workload: 4,000 tons*  
*location: Cu Chi Dist., HCMC*

**the other projects:**

**Dai Dong Tien Plastic Factory**  
*area: 10,000 m<sup>2</sup> - workload: 210 tons*  
*location: Nhon Trach IP, Dong Nai Province*

**Youngil Workshop**  
*workload: 750 tons*  
*location: Bourbon IP, Tay Ninh Province*

**Omexey Furniture Factory**  
*area: 32,000 m<sup>2</sup>*  
*location: Tan Uyen, Binh Duong Province*

**Nylon Chempack - Vina Production Factory**  
*area: 13,500 m<sup>2</sup>*  
*location: Tam Phuoc IP, Dong Nai Province*

**High Point Wood Workshop**  
*area: 80,000 m<sup>2</sup> - workload: 3,000 tons*  
*location: Tan Uyen IP, Binh Duong Province*

**JRD Oto Manufacturing Factory**  
*area: 26,700 m<sup>2</sup>*  
*location: An My, Phu Yen Province*

**Omexey Furniture Factory**  
*area: 32,000 m<sup>2</sup>*  
*location: Tan Uyen, Binh Duong Province*





### the other projects:

#### Big C Nha Trang Mall

area: 30,000 m<sup>2</sup> - workload: 520 tons

location: Nha Trang City, Khanh Hoa Province

#### Vincom Mall (Long Thanh)

area: 1,500 m<sup>2</sup> - workload: 400 tons

location: Long Thanh District, Dong Nai Province

#### Binh Duong Square Parking Garage

area: 3,500 m<sup>2</sup> - workload: 200 tons

location: Thu Dau Mot City, Binh Duong Province



#### Showroom Peugeot Binh Duong

area: 2000 m<sup>2</sup> - workload: 418 tons

location: Thuan An, Binh Duong Province



#### Pandora Truong Chinh Trade Center

area: 30,000 m<sup>2</sup> - workload: 530 tons

location: Tan Binh Dist., HCMC



#### Showroom Kia & Mazda Hoang Minh Giam

area: 9,500 m<sup>2</sup> - workload: 900 tons

location: Phu Nhuan District, HCMC



#### Vincom Trade Center (Thu Duc)

area: 27,860 m<sup>2</sup> - workload: 400 tons

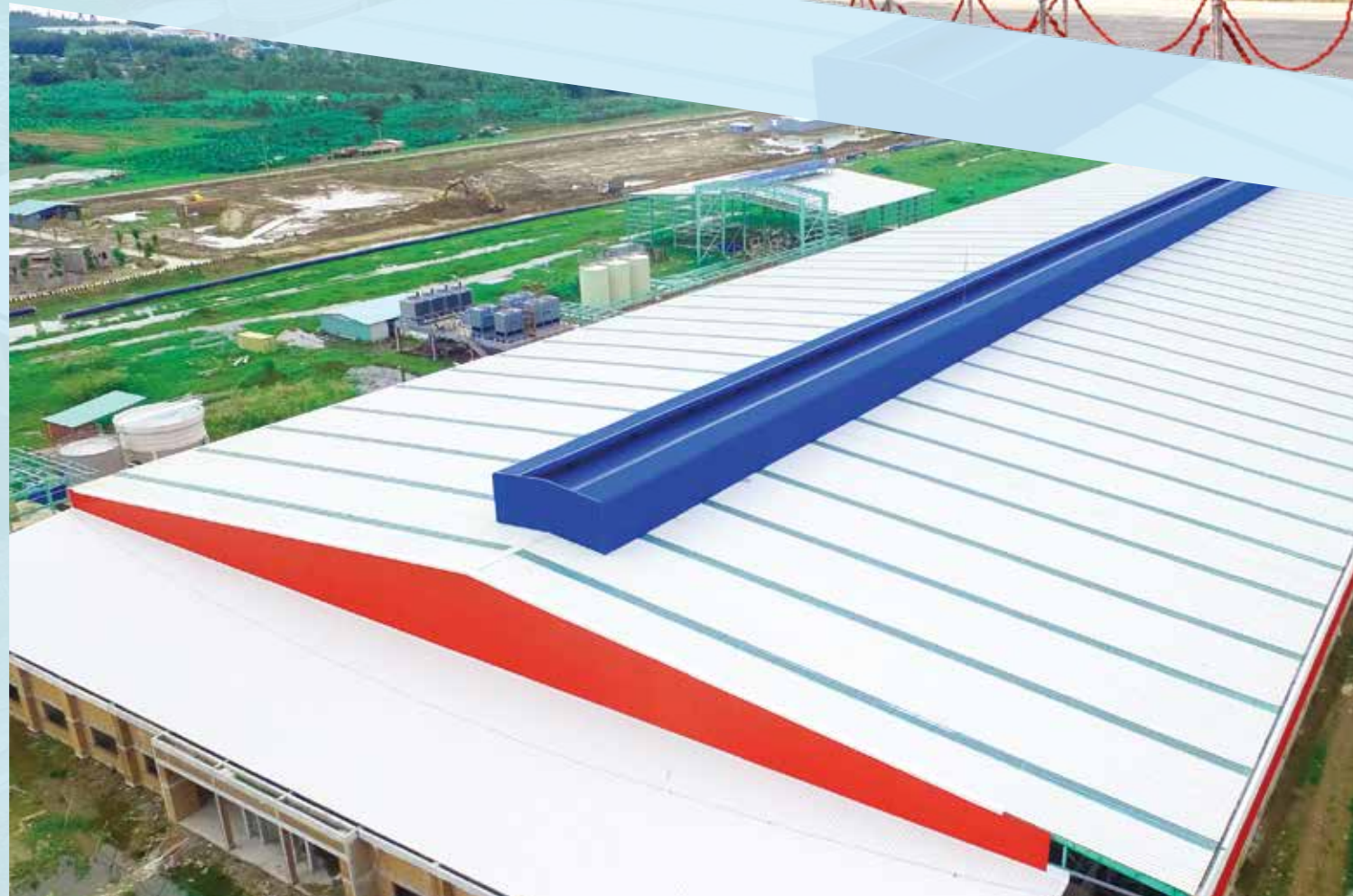
location: Thu Duc Dist., HCMC



**1. Number One Chu Lai**  
area: 42,000 m<sup>2</sup> - workload: 1,200 tons  
location: Hau Can Cang IP, Quang Nam Province

**2. Number One Hau Giang**  
area: 40,000 m<sup>2</sup> - workload: 900 tons  
location: Song Hau IP, Hau Giang Province

INVESTOR:  
**TAN HIEP PHAT GROUP**





## ALUMINUM FACTORY VINH HUNG VIET NAM

location: Long Giang IP, Tien Giang Province

**INVESTOR:**  
VINH HUNG ALUMINUM CO.,LTD

**WORKSHOP 1**  
area: 20,000 m<sup>2</sup> - work: 720 tons

**WORKSHOP 2**  
area: 13,000 m<sup>2</sup> - work: 390 tons

**WORKSHOP**  
area: 14,000 m<sup>2</sup> - work: 300 tons

**OFFICE**  
area: 8,000 m<sup>2</sup> - work: 190 tons







**MDF - FSC PRODUCTION FACTORY  
(DONG PHU)**  
top 10 modern factory in the world

**INVESTOR:**  
**KIM TIN GROUP**

area: 25,000 m<sup>2</sup> - workload: 1,200 tons  
location: Nam Dong Phu IP, Binh Phuoc Province

**construction work:**  
workshop, tower house

**the other project of kim tin group:**

**MDF - FSC Production Factory (Phuoc Long)**  
area: 16,000 m<sup>2</sup>  
location: Phuoc Long, Binh Phuoc Province







Vietnamese - German University

## Vietnamese-German University

*Top Universities in Vietnam*

**INVESTOR:**  
MINISTRY OF EDUCATION  
AND TRAINING

area: 200,000 m<sup>2</sup> - workload: 2,500 tons

location: Thu Dau Mot City, Binh Duong Province

**contruction work:**  
workshop, tower house







## DAI NAM RACE COURSE

**INVESTOR:**  
DAI NAM JOINT STOCK COMPANY

**area :** 12,000 m<sup>2</sup> - **workload:** 1,000 tons  
**location:** Dai Nam Cultural Park, Binh Duong Province

**contruction work:**  
grandstand







## FACTORY FOR LEASE OF SAO DAU JOINT STOCK COMPANY

### BLOCK 2:

**area :** 44,000 m<sup>2</sup> - **workload:** 700 tons

### BLOCK 3:

**area :** 57,000 m<sup>2</sup> - **workload:** 2,400 tons

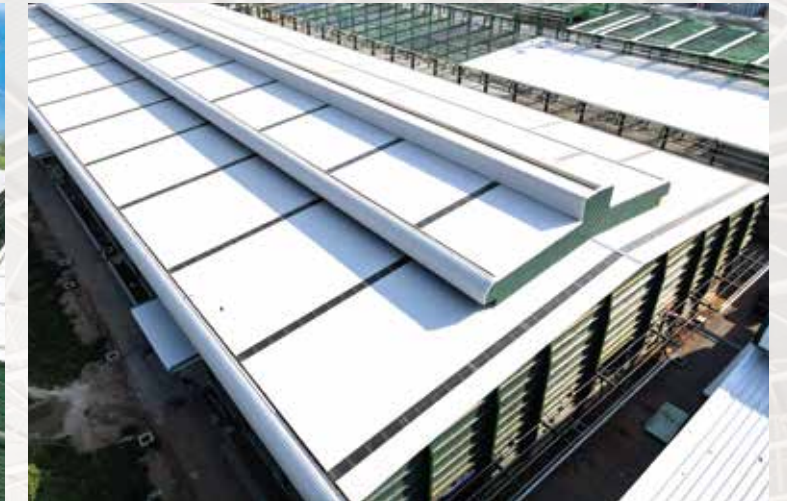
**location :** Dau Giay Industrial Park, Dau Giay Town,  
Thong Nhat, Dong Nai Province

**construction work:**  
warehouse, parking area

### INVESTOR:

**SAO DAU JOINT STOCK COMPANY**





### HANH PHUC RICE MILL

area: 42,000 m<sup>2</sup> - workload: 3,000 tons

location: Luong An Tra commune,  
Tri Ton district, An Giang province

### INVESTOR:

**TAN LONG GROUP  
JOINT STOCK COMPANY**

contruction work:  
workshop



### FACTORY OF OJITEX VIETNAM CO.,LTD LONG THANH BRANCH PROJECT

area: 41,000 m<sup>2</sup> - workload: 1,000 tons

location: Lot H, Loc An Industrial Park – Binh Son,  
Long An Commune, Long Thanh District,  
Dong Nai Province.

### INVESTOR:

**OJITEX (VIETNAM) CO., Ltd**

contruction work:  
workshop







**THE READY-BUILT WAREHOUSE PROJECT OF  
BW INDUSTRIAL TAN PHU TRUNG**

**area :** 64,000 m<sup>2</sup> - **workload:** 800 tons  
**location:** Tan Phu Trung IZ, Cu Chi District, HCMC

**construction work:**  
warehouse

**THE READY-BUILT WAREHOUSE PROJECT OF  
BW INDUSTRIAL THOI HOA**

**area :** 30,000 m<sup>2</sup> - **workload:** 600 tons  
**location:** Thoi Hoa Industrial Park, Thoi Hoa Ward,  
Ben Cat Town, Binh Duong

**construction work:**  
warehouse, parking area

**INVESTOR:**

**BW INDUSTRIAL  
DEVELOPMENT JSC**







**Hansae Garment Factory**  
area: 20.000 m<sup>2</sup> - workload: 1.000 tons  
location: Thilawa SEZ (Zone B),  
Yangon, Myanmar



**Handbag Factory**  
area: 8.400 m<sup>2</sup> - workload: 300 tons  
location: South Dagon Township,  
Yangon, Myanmar





### Showa Glove Factory

area: 14,000 m<sup>2</sup> - workload: 300 tons

location: Thilawa SEZ (Zone A), Yangon, Myanmar



### the other project:

#### Garment Warehouse

area: 2.900 m<sup>2</sup> - workload: 50 tons

location: Shew Lin Pan Industrial Zone,  
Hlaing Thar Yar, Yangon, Myanmar

#### Sky Way Garment Warehouse

area: 2.300 m<sup>2</sup> - workload: 43 tons

location: Bago SEZ, Bago, Myanmar







**2004**  
Established



**3**  
Offices



## 2 Factories



LEED Gold on Factory



LEED Platinum on Office



**66.000**  
Capacity (tons/year)



## CLIENTS & PARTNERS



## MDF - FSC PRODUCTION FACTORY (DONG PHU)

Investor: KIM TIN GROUP  
area: 25,000m2 - workload: 1,200 tons  
location: Nam Dong Phu IP, Binh Phuoc Province





SCAN NOW  
Download Profile Online

## TRIVIET STEEL BUILDINGS CO., LTD



### HCM OFFICE

3rd Floor Carina Plaza, 1648 Vo Van  
Kiet St., W.16, Dist.8, HCMC, Vietnam.  
Tel: (+84) 28 6298 5703 - HCM Office  
(+84) 982 84 98 99 - Business Department



### BINH DUONG FACTORY

Ong Dong, Tan Hiep W., Tan Uyen  
Dist., Binh Duong Province, Vietnam.  
Tel: (+84) 274 365 3080  
Fax: (+84) 274 365 3079



### TRIVIET STEEL MYANMAR

No. H39, 3rd Main Road,  
Thiri Yadanar Wholesales Complex Market,  
North Okkalapa Township, Yangon, Myanmar  
Tel: (+95) 9953 335 124 - Office  
(+95) 9953 335 125 - Business Department



### HA NOI OFFICE

12 th Floor, Viwaseen Tower, 48 To Huu St.,  
Trung Van Ward, Nam Tu Liem Dist., Ha Noi, Vietnam.  
Tel: (+84) (024) 32 018 279



### CHAU DUC FACTORY

Lot No.29, D2 Street, Chau Duc IP,  
Nghia Thanh W., Chau Duc Dist.,  
Ba Ria Vung Tau Province, Vietnam.



Email: [info@trivietsteel.com](mailto:info@trivietsteel.com)

Website: [www.trivietsteel.com](http://www.trivietsteel.com)